



UMT MARINE

QUALITY IN EVERYTHING WE DO

H1000

PRODUCT SHEET

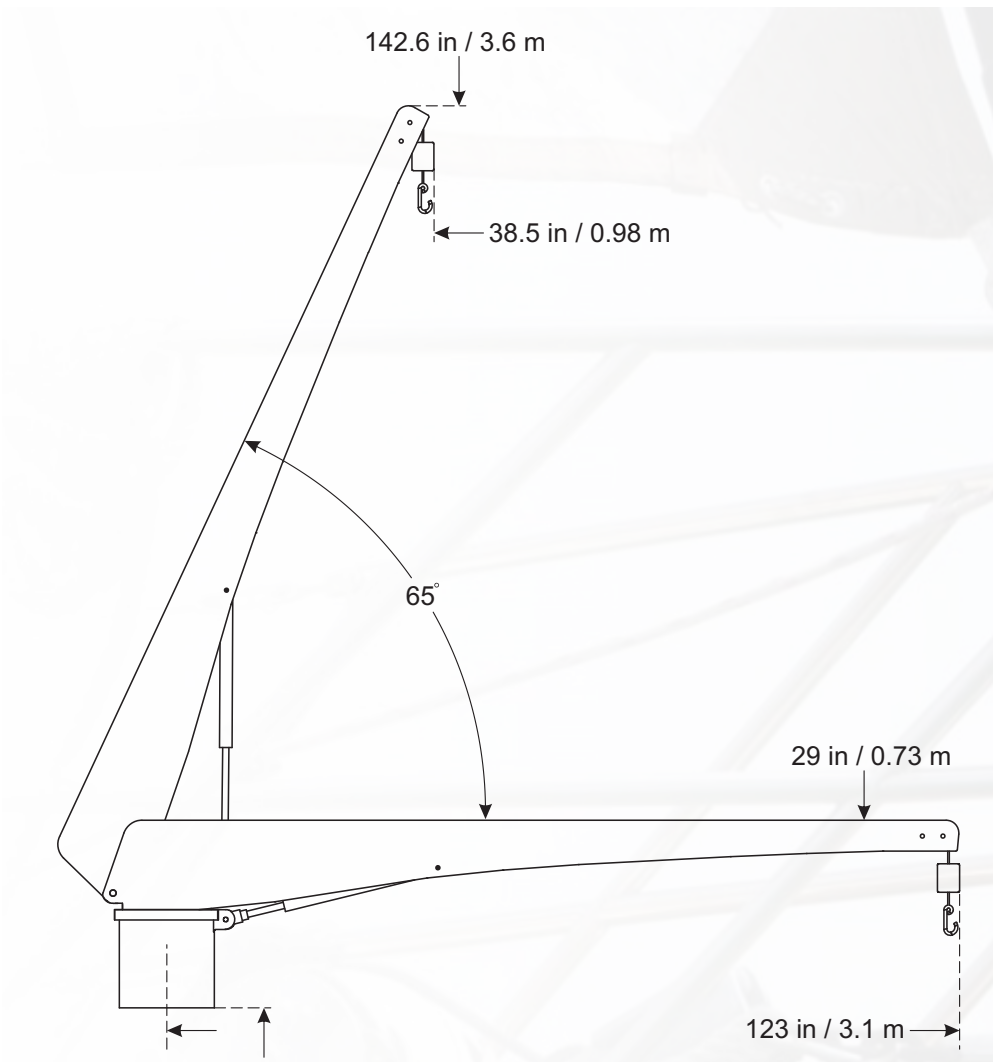
The H1000 is a fixed reach davit design for an easy one person operation. The H1000 is fully hydraulic and is available in a custom length upon request. The davit is easy to maintain and is covered by UMT Service & Support.



RATED CAPACITY
H1000: 1000 lbs / 453 kg

SYSTEM WEIGHT
H1000: 375 lbs / 170 kg

RECOMMENDED VESSEL
H1000: 50ft+ / 15m+



SYSTEM SPECIFICATION
LIFT Hydraulic Boom Cylinder
ROTATION 360° Hydraulic Actuator
CABLE SYSTEM Hydraulic Cable Cylinder 3/16" Stainless Steel Cable Cable Length: 20ft / 6m
REACH Boom: 10ft / 3m
CONTROLLER Standard Remote

OPTIONS
Custom Reach Upon Request VLP or Round Base Base or Standpipe Mount 360° Manual Rotation 12 / 24V DC Power Wireless Remote

WARRANTY
5 Year Limited Structural 2 Year Limited Electrical 1 Year Limited Paint & Finish